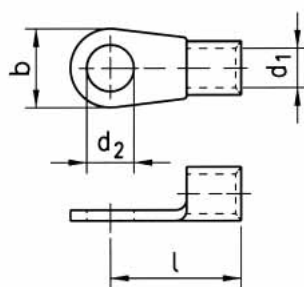


RING-SHAPED CRIMP CABLE LUG



Illustration only



DIN 46234 and similar

Application area

For multi-wire, fine-wire and very fine wire copper conductors, such as compliant with DIN EN 60228 Class 2, 5 and 6

Notice

The user must check the inserted cable (using a pull-out test, if required).

Max. temperature resistance	125 °C
Material	Electrolytic copper
Surface	Tin-plated

Min./max. wire cross section	Wire cross section	Flange hole	Nominal size	Wire diameter (d1)	Diameter of hole (d2)	Distance between sleeve end and centre of hole (l)	Sleeve length	Width (b)	Art. No.	P. Qty.
0.5-1 mm ²		M3	3 - 1	1.6 mm	3.2 mm	10.8 mm	4.8 mm	6 mm	0967 601 3	100
0.5-1 mm ²		M3.5	3,5 - 1	1.6 mm	3.7 mm	10.8 mm	4.8 mm	6 mm	0967 601 35	100
0.5-1 mm ²		M4	4 - 1	1.6 mm	4.3 mm	11.8 mm	4.8 mm	8 mm	0967 601 4	100
0.5-1 mm ²		M5	5 - 1	1.6 mm	5.3 mm	12.8 mm	4.8 mm	10 mm	0967 601 5	100
0.5-1 mm ²		M6	6 - 1	1.6 mm	6.5 mm	14.8 mm	4.8 mm	11 mm	0967 601 6	100
1.5-2.5 mm ²		M3	3 - 2,5	2.3 mm	3.2 mm	10.8 mm	4.8 mm	6 mm	0967 602 3	100
1.5-2.5 mm ²		M3.5	3,5 - 2,5	2.3 mm	3.7 mm	10.8 mm	4.8 mm	6 mm	0967 602 35	100
1.5-2.5 mm ²		M4	4 - 2.5	2.3 mm	4.3 mm	11.8 mm	4.8 mm	8 mm	0967 602 4	100
1.5-2.5 mm ²		M5	5 - 2.5	2.3 mm	5.3 mm	13.8 mm	4.8 mm	10 mm	0967 602 5	100
1.5-2.5 mm ²		M6	6 - 2.5	2.3 mm	6.5 mm	15.8 mm	4.8 mm	11 mm	0967 602 6	100
1.5-2.5 mm ²		M8	8 - 2.5	2.3 mm	8.4 mm	16.8 mm	4.8 mm	14 mm	0967 602 8	100
1.5-2.5 mm ²		M10	10 - 2,5	2.3 mm	10.5 mm	17 mm	4.8 mm	15 mm	0967 602 10	100
4-6 mm ²		M4	4 - 6	3.6 mm	4.3 mm	14 mm	6 mm	8 mm	0967 606 4	50
4-6 mm ²		M5	5 - 6	3.6 mm	5.3 mm	15 mm	6 mm	10 mm	0967 606 5	50
4-6 mm ²		M6	6 - 6	3.6 mm	6.5 mm	16 mm	6 mm	11 mm	0967 606 6	50
4-6 mm ²		M8	8 - 6	3.6 mm	8.4 mm	19 mm	6 mm	14 mm	0967 606 8	50
4-6 mm ²		M10	10 - 6	3.6 mm	10.5 mm	21 mm	6 mm	18 mm	0967 606 10	50
4-6 mm ²		M12	12 - 6	3.6 mm	13.0 mm	21 mm	6 mm	18 mm	0967 606 12	50
	10 mm ²	M4	4 - 10	4.5 mm	4.3 mm	16 mm	8 mm	10 mm	0967 610 4	50
	10 mm ²	M5	5 - 10	4.5 mm	5.3 mm	16 mm	8 mm	10 mm	0967 610 5	50
	10 mm ²	M6	6 - 10	4.5 mm	6.5 mm	17 mm	8 mm	11 mm	0967 610 6	50
	10 mm ²	M8	8 - 10	4.5 mm	8.4 mm	20 mm	8 mm	14 mm	0967 610 8	50
	10 mm ²	M10	10 - 10	4.5 mm	10.5 mm	21 mm	8 mm	18 mm	0967 610 10	50
	10 mm ²	M12	12 - 10	4.5 mm	13 mm	23 mm	8 mm	22 mm	0967 610 12	50
	16 mm ²	M5	5 - 16	5.8 mm	5.3 mm	20 mm	10 mm	11 mm	0967 616 5	50
	16 mm ²	M6	6 - 16	5.8 mm	6.5 mm	20 mm	10 mm	11 mm	0967 616 6	50
	16 mm ²	M8	8 - 16	5.8 mm	8.4 mm	22 mm	10 mm	14 mm	0967 616 8	50
	16 mm ²	M10	10 - 16	5.8 mm	10.5 mm	24 mm	10 mm	18 mm	0967 616 10	50
	16 mm ²	M12	12 - 16	5.8 mm	13.0 mm	26 mm	10 mm	22 mm	0967 616 12	50
	25 mm ²	M5	5 - 25	7.5 mm	5.3 mm	25 mm	11 mm	12 mm	0967 625 5	50
	25 mm ²	M6	6 - 25	7.5 mm	6.5 mm	25 mm	11 mm	12 mm	0967 625 6	50
	25 mm ²	M8	8 - 25	7.5 mm	8.4 mm	25 mm	11 mm	16 mm	0967 625 8	50

Can be stored in ORSY system