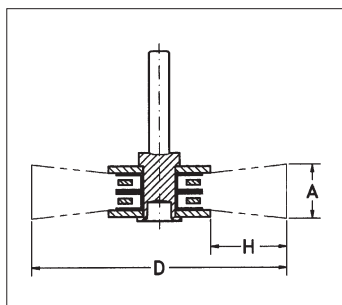


BRUSHES FOR STRAIGHT GRINDERS

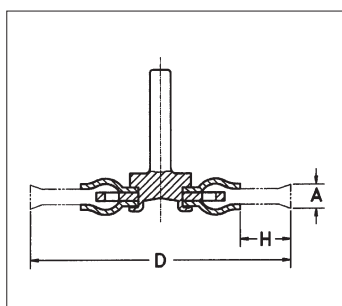
BRUSHES FOR STRAIGHT GRINDERS AND ELECTRIC DRILLS



- Rust-free steel wire for machining stainless-steel surfaces.
- For removing rust and paint.
- For removing tempering colors from stainless-steel welding seams.
- For cleaning welding seams.
- For light deburring work.

D in mm	H in mm	A in mm	Wire dia. in mm	Shank dia. in mm	Max. rpm	Art. No.	P. Qty.
40	9	10	0.20	6	18,000	0714 692 300	1
60	17	14	0.30	6	15,000	0714 692 301	1

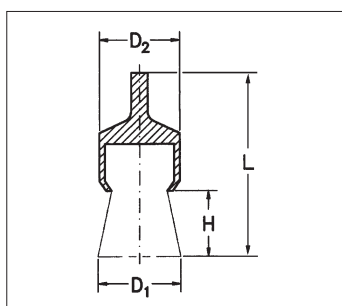
SHANK ROUND BRUSH WITH BRAIDED STAINLESS-STEEL WIRE



- For rough brushing work.
- For rust removal, deburring and roughening of stainless-steel surfaces.
- For removing paint, scale, e.g. underseal.
- For machining hard-to-reach areas.

D in mm	H in mm	A in mm	Wire dia. in mm	Shank dia. in mm	Max. rpm	Art. No.	P. Qty.
75	15	12	0.50	6	25,000	0714 692 600	1

TAPERED BRUSH WITH SHANK, CORRUGATED WIRE



- For machining hard-to-reach areas.
- For cleaning corners, recesses, drilled holes, molds and cast parts.
- For removing paint and rubber residues.

D1 in mm	D2 in mm	H in mm	L in mm	Wire dia. in mm	Shank dia. in mm	Max. rpm	Art. No.	P. Qty.
12	10	20	60	0.30	6	20,000	0714 69 200	1
12	10	20	60	0.20	6	20,000	0714 692 204*	1
12	10	20	60	0.30	6	20,000	0714 692 200*	1

* Version with stainless-steel wire, plastic-covered sleeve

Note: Always wear safety goggles and safety gloves when working with machine brushes!