

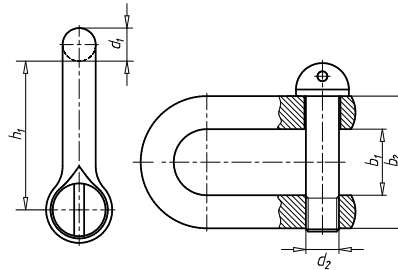
Shackle

Zinc-plated steel

Connection element

- For towing motor vehicles
- For lengthening ropes and chains

Material	Steel
Form	A
RoHS-compliant	Yes



Thread type x shackle bolt diameter (d ₂)	Shackle diameter (d ₁)	Shackle internal width (b ₁)	Shackle external width (b ₂)	Internal shackle height (centre bolt) (h ₁)	Design	Surface	Nominal size	Load capacity	Art. no.	P. Qty.
M 5 mm	5 mm	7 mm	15 mm	18 mm	Curved	Zinc plated	0.1	100 kg	0523 01	1/25
M 6 mm	6 mm	8 mm	18 mm	21 mm	Curved	Zinc plated	0.16	160 kg	0523 016	1/25
M 8 mm	8 mm	11 mm	25 mm	28 mm	Curved	Zinc plated	0.25	250 kg	0523 025	1/25
M 10 mm	10 mm	14 mm	30 mm	35 mm	Curved	Zinc plated	0.4	400 kg	0523 04	1/25
M 12 mm	12 mm	17 mm	37 mm	42 mm	Curved	Zinc plated	0.6	630 kg	0523 06	1/40
M 16 mm	15 mm	21 mm	47 mm	57 mm	Forged	Zinc plated	1	1000 kg	0523 1	1/25
M 20 mm	19 mm	27 mm	61 mm	71 mm	Forged	Zinc plated	1.6	1600 kg	0523 16	1
M 22 mm	21 mm	30 mm	68 mm	78 mm	Forged	Zinc plated	2	2000 kg	0523 2	1
M 24 mm	23 mm	33 mm	75 mm	85 mm	Forged	Zinc plated	2.5	2500 kg	0523 25	1/10
M 27 mm	26 mm	38 mm	86 mm	97 mm	Forged	Zinc plated	3	3150 kg	0523 3	1
M 30 mm	29 mm	42 mm	96 mm	106 mm	Forged	Zinc plated	4	4000 kg	0523 4	1
M 36 mm	33 mm	47 mm	107 mm	129 mm	Forged	Zinc plated	5	5000 kg	0523 5	1
M 39 mm	37 mm	53 mm	121 mm	139 mm	Forged	Zinc plated	6	6300 kg	0523 6	1
M 45 mm	41 mm	60 mm	136 mm	162 mm	Forged	Zinc plated	8	8000 kg	0523 8	1
M 48 mm	45 mm	66 mm	150 mm	175 mm	Forged	Hot dip galvanized	10	10000 kg	0523 10	1
M 52 mm	47 mm	73 mm	167 mm	234 mm	Forged	Hot dip galvanized	12	12 t	0523 12	1
M 60 mm	52 mm	81 mm	185 mm	270 mm	Forged	Hot dip galvanized	16	16 t	0523 161	1

Can be stored in ORSY® system

Notice

- Dimension M5 - M12 curved design
- Dimension M16 - M48 forged design
- From M48 hot-dip galvanized