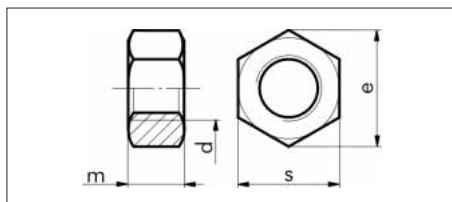
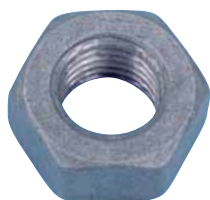


## HEXAGON BOLTS

Thread dia. d	l in mm	DIN 933 full thread Art. No.	P. Qty.	DIN 931 with shaft Art. No.	P. Qty.
M24	55	<b>0059 724 55</b>	25/1		
	60	<b>0059 724 60</b>			
	65	<b>0059 724 65</b>			
	70	<b>0059 724 70</b>			
	80	<b>0059 724 80</b>			
	90	<b>0059 724 90</b>			
	100	<b>0059 724 100</b>	10/1		
	110	<b>0059 724 110</b>			
M27	70	<b>0059 727 70</b>	10/1		
	80	<b>0059 727 80</b>			



**With shaft in accordance with DIN 931**

**With threading up to head according to DIN 933**

**Strength class 8.8U**

**Hot-galvanized steel**  
(thermally galvanized = tzn)

**Hexagon nuts in accordance with DIN 934**

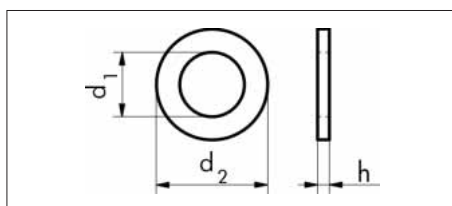
**Strength class I8I**

**Hot-galvanized steel**  
(thermally galvanized = tzn)

**Note:**

No external monitoring as per Building Rules List!

Thread dia. d	s in mm	e in mm	m in mm	Therm. galv. 8 steel Art. No.	P. Qty.
M 8	13	14.38	6.5	<b>0317 000 8</b>	200
M 10	17	18.9	8	<b>0317 000 10</b>	100
M 12	19	21.1	10	<b>0317 000 12</b>	100
M 16	24	26.75	13	<b>0317 000 16</b>	1/50
M 20	30	32.95	16	<b>0317 000 20</b>	1/25
M 24	36	39.55	19	<b>0317 000 24</b>	1/25
M 27	41	45.2	22	<b>0317 000 27</b>	1/10



**Washers in accordance with DIN 125**

**Hardness class 140HV**

**Hot-galvanized steel**  
(thermally galvanized = tzn)

- < 16 mm shape A
- > 16 mm shape B

**Note:**

No declaration of compliance as per Building Rules List!

For thr. dia.	d <sub>1</sub> in mm	d <sub>2</sub> in mm	h in mm	Therm. galv. steel Art. No.	P. Qty.
M 8	8.4	16	1.6	<b>0407 000 8</b>	500
M 10	10.5	20	2	<b>0407 000 10</b>	200
M 12	13	24	2.5	<b>0407 000 12</b>	200
M 16	17	30	3	<b>0407 000 16</b>	100
M 20	21	37	3	<b>0407 000 20</b>	50
M 24	25	44	4	<b>0407 000 24</b>	50
M 27	28	50	4	<b>0407 000 27</b>	25