

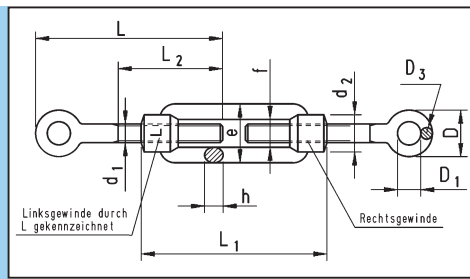
# Turnbuckles

## DIN 1480

### with weld-on ends

Steel, galvanised, blue passivated

Thread Ø d <sub>1</sub>	L <sub>1</sub> mm	e mm	h mm	f mm	d <sub>2</sub> mm	L <sub>2</sub> mm	b mm	Steel, galv., blue pass. <b>Art. No.</b>	Pack Qty.
M6	110	19	6	9	12	120	65	<b>0521 016</b>	1
M8	110	23	8	11	15	120	65	<b>0521 018</b>	
M10	125	30	9	14	18	150	75	<b>0521 011 0</b>	
M12	125	34	11	16	21	150	75	<b>0521 011 2</b>	
M16	170	42	14	20	27	200	100	<b>0521 011 6</b>	
M20	200	52	17	24	34	220	120	<b>0521 012 0</b>	
M24	255	60	20	28	39	260	150	<b>0521 012 4</b>	



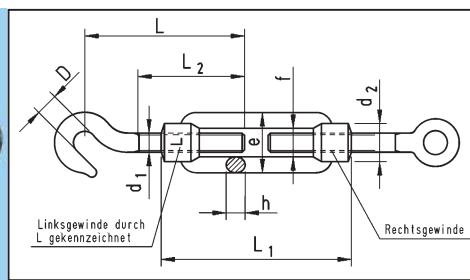
# Turnbuckles

## DIN 1480

### with two eye hooks

Steel, galvanised, blue passivated

Thread Ø d <sub>1</sub>	L <sub>1</sub>	e	h	f	d <sub>2</sub>	L	D	D <sub>1</sub>	D <sub>3</sub>	L <sub>2</sub>	Steel, galv., blue pass. <b>Art. No.</b>	Pack Qty.
M6	110	19	6	9	12	80	20	10	5	55	<b>0521 026</b>	1
M8	110	23	8	11	15	84	24	10	7	55	<b>0521 028</b>	
M10	125	30	9	14	18	105	29	14	7,5	65	<b>0521 021 0</b>	
M12	125	34	11	16	21	115	36	16	10	70	<b>0521 021 2</b>	
M16	170	42	14	20	27	150	48	22	13	90	<b>0521 021 6</b>	
M20	200	52	17	24	34	166	51	24	13,5	105	<b>0521 022 0</b>	



# Turnbuckles

## DIN 1480

### with eyes and hooks

Steel, galvanised, blue passivated

Thread Ø d <sub>1</sub>	L <sub>1</sub>	e	h	f	d <sub>2</sub>	L	L <sub>2</sub>	D	Steel, galv., blue pass. <b>Art. No.</b>	Pack Qty.
M6	110	19	6	9	12	80	60	9.5	<b>0521 036</b>	1
M8	110	23	8	11	15	84	60	11.0	<b>0521 038</b>	
M10	125	30	9	14	18	105	65	13.5	<b>0521 031 0</b>	
M12	125	34	11	16	21	115	70	15.5	<b>0521 031 2</b>	
M16	170	42	14	20	27	150	95	20.0	<b>0521 031 6</b>	
M20	200	52	17	24	34	166	100	22.0	<b>0521 032 0</b>	

Thread Ø d <sub>1</sub>	M6	M8	M10	M12	M16	M20	M24
max. load capacity N	2,250	4,100	6,500	9,300	17,700	27,000	39,200

The permissible loads apply to standard applications with welding studs. However, these are reference values only. To determine the actual load capacity of the turnbuckles, they should be calculated in each individual case.