

Cordless drywall screwdriver ATS 18 AUTOMATIC M-CUBE

Light and compact cordless drywall screwdriver with automatic function, developed by Würth to meet the needs of tradespeople

Automatic function

If the switch is locked in AUTOMODE, the motor will only be triggered by the contact pressure of the positioned screw. As a result, pleasant, energy-saving and low-noise working is achieved.

Quick-change bit holder

Fast and convenient bit changes, e.g. when working in conjunction with the optional attachment device.

Depth stop

Easy adjustment of screw depth for cleaner working results.

Continuous monitoring of the motor

The electronic motor protection function switches the motor off ahead of time in the event of blockage, overloading or overheating.

Long motor service life

Efficient, low-maintenance, brushless EC motor with power reserves. Also maintains a more stable speed curve under load.

Well-lit working area

LED lamp on the battery block.

Convenient, effortless work

Highly compact and ergonomic design with low weight.

2 Years WÜRTH MASTERPLUS Warranty for wear damage and replacement of batteries and chargers

The current WÜRTH MASTERPLUS warranty conditions must be observed.

3 Years Warranty on manufacturing and material defects

Excluded are damages caused by improper use, overloading or failure to observe the operating instructions.



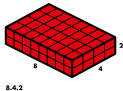
Illustration only



Nominal voltage	18 V/DC
Min./max. idle speed	0-5000 rpm
Max. torque	5 Nm
Max. screw diameter	5 mm
Tool holding device	1/4-inch quick-action chuck
Weight of machine with rechargeable battery	1.35 kg
Height	183 mm

Length	235 mm
Width	52 mm

Included in delivery	Art. no.	P. Qty.
Batteries not included; additional accessories not included	5701 409 000	1
With two 2 Ah batteries; incl. attachment	5701 409 004	1

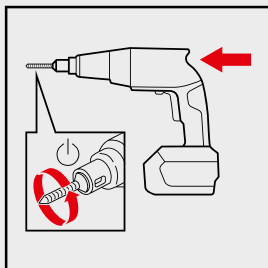


Details/Application

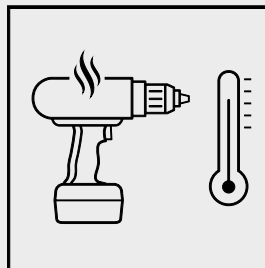


Electronic motor protection function:

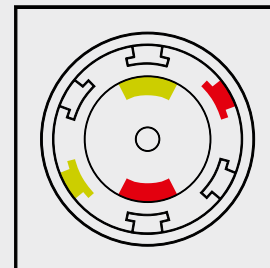
Brushless motor:



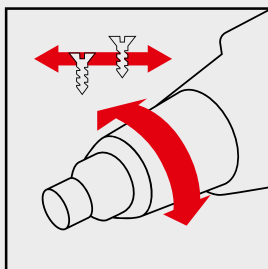
Automatic function:
If the switch is locked in AUTOMODE, the motor will only be triggered by the contact pressure of the positioned screw. As a result, pleasant, energy-saving and low-noise working is achieved.



Continuous motor monitoring increases its service life, since the motor is shut off quickly in the event of overloading, overheating or a jam.



Longer working life of the EC-motors, low-maintenance, as carbon brushes do not have to be changed. More efficient and powerful motor in a smaller size.



Depth stop:
Easy adjustment of screw depth for cleaner working results.

Notice

✓ **WÜRTH M-CUBE battery system**

✗ **CV battery system**

Contents for art. no. 5701 409 004		
Designation	Art. no.	Quantity
Phillips bit E 6.3 (1/4 inch), Length 148 mm	0614 100 215	3
Phillips bit C 6.3 (1/4 inch), Length 25 mm	0614 176 461	1
Universal holder E 6.3 (1/4")	0614 176 754	1
System case 8.4.2	5581 011 000	1
Cordless drywall screwdriver ATS 18 AUTOMATIC M-CUBE	5701 409 000	1
Attachment MSV 55-TS For ATS 18 AUTOMATIC M-CUBE	5701 421 000	1
Rechargeable battery Li-ion 18 V BASIC M-CUBE 2 Ah	5703 420 000	2
Charger ALG 18 V M-CUBE ALG 18/4 BASIC	5705 180 000	1
Case insert for MASTER machines	5801 842 409	1

Related products		Art. no.
Dry wall screw with double thread, collated		0179 339 35
Dry wall screw with double-start thread		0189 039 35
Safety goggles Cetus®X-treme 65KB		0899 102 382

Related products for	Designation	Art. no.
5701 409 000	Phillips bit	0614 100 215
	Phillips bit	0614 176 461
	Universal holder E 6.3 (1/4")	0614 176 754
	System case 8.4.2	5581 011 000
	Attachment MSV 55-TS For ATS 18 AUTOMATIC M-CUBE	5701 421 000
	Rechargeable battery Li-ion 18 V BASIC M-CUBE 2 Ah	5703 420 000
	Rechargeable battery Li-ion 18 V BASIC M-CUBE 5 Ah	5703 450 000
	Rechargeable battery Li-ion 18 V BASIC M-CUBE 4 Ah	5704 180 000
	Charger ALG 18 V M-CUBE ALG 18/4 BASIC	5705 180 000
	Charger ALG 18 V M-CUBE ALG 18/6 FAST	5705 860 000
	Case insert for MASTER machines	5801 842 409
5701 409 004	Phillips bit	0614 176 461
	Universal holder E 6.3 (1/4")	0614 176 754
	Rechargeable battery Li-ion 18 V BASIC M-CUBE 5 Ah	5703 450 000
	Rechargeable battery Li-ion 18 V BASIC M-CUBE 4 Ah	5704 180 000
	Charger ALG 18 V M-CUBE ALG 18/4 BASIC	5705 180 000
	Charger ALG 18 V M-CUBE ALG 18/6 FAST	5705 860 000