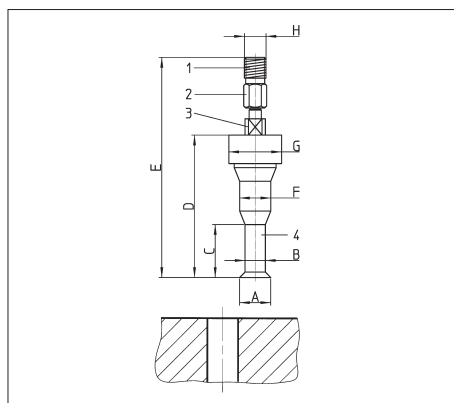


INTERNAL EXTRACTOR



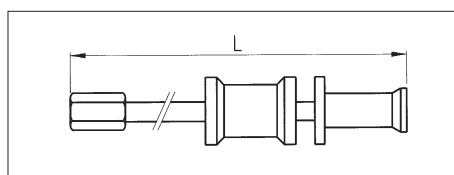
Dia. A in mm	Dia. B in mm	C in mm	D in mm	E in mm	Dia. F in mm	Dia. G in mm	H in mm	Art. No.	
5 - 8	4	10	64	106	12	26	M10	0714 525 051	1
8 - 12	6.8	15	64	106	14	26	M10	0714 525 052	1
12 - 15	9.5	22	70	110	15	26	M10	0714 525 053	1
14 - 19	11.5	27	72	118	16	28	M10	0714 525 054	1
19 - 25	16	55	78	124	16	28	M10	0714 525 055	1
24 - 30	19	55	90	136	19	35	M10	0714 525 056	1
30 - 35	25	68	90	136	25	35	M10	0714 525 057	1
35 - 45	28	86	110	170	28	42	M14x1.5	0714 525 058	1
45 - 55	38	86	110	170	30	42	M14x1.5	0714 525 059	1
55 - 70	46	115	143	206	38	55	M14x1.5	0714 525 060	1

For extracting tightly seated ball bearings, rings and bushings from holes.

- The specially designed extraction hooks exactly reach behind the radius of the inner race of the ball bearing.
- Extraction jaws are turned and hardened.

Operation

Guide the internal extractor into the hole. Screw in the spindle (2) while bracing the nut (3). When doing so, the extraction jaws (4) spread and the extraction lugs are pressed under the bearing. Screw the slide hammer or counter-support onto the connection thread (1) and extract the bearing.



For fast extraction of components in conjunction with internal extractors.

- After positioning the internal extractor, screw the slide hammer rod to the spindle (2) and actuate the slide hammer.

L in mm		For Internal Extractor Art. No.	For hole dia. in mm	Connection thread (H)	Art. No.	
280	0.4	0714 525 051 - 0714 525 057	5 - 35	M 10 M 7	0714 525 030	1
630	3.2	0714 525 051 - 0714 525 060	5 - 35 35 - 70	M 10 M 14 x 1.5 15 - 16G	0714 525 031	1

ADAPTER SET, 6-PIECE



Art. No. 0714 525 032

P. Qty. 1

As connecting or reducing adapter for Würth Internal Extractors

Art. No. 0714 525 001 - 0714 525 010 and Art. No. 0714 525 051 - 0714 525 060.

In conjunction with Slide Hammer

Art. No. 0714 525 030 and 0714 525 031, or when connecting adapter is lost.