

Speed cutting disc For stainless steel

Very good cutting performance with a long service life

- Very fast cutting times
- Extremely thin for precise, almost burr- and chatter-free cuts (very clean and cool cutting surfaces)
- Very easy to use and ensures user- and machine-friendly working
- Very good breakage resistance



Versatility	●●○○
Service life	●●●○
Cutting ability (point system)	●●●●
Handling/user-friendliness (point system)	●●●○
Cut quality (point system)	●●●○
Max. circumferential speed	80 m/s
Color Coding System	 Stainless steel

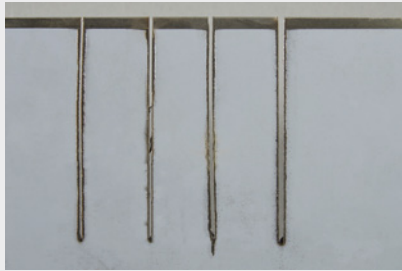


Diameter	Thickness	Drill hole	Design	Max. rotation speed	Art. no.	P. Qty.
50 mm	1 mm	6 mm	Straight	30500 rpm	0664 130 501	50
60 mm	1 mm	6 mm	Straight	25000 rpm	0664 130 601	50
76 mm	1 mm	10 mm	Straight	20100 rpm	0664 130 761	10/50
100 mm	1 mm	10 mm	Straight	15300 rpm	0664 131 000	25
115 mm	0.8 mm	22.23 mm	Cranked	13300 rpm	0664 131 148	25
115 mm	1 mm	22.23 mm	Straight	13300 rpm	0664 131 150	25
115 mm	1 mm	22.23 mm	Straight	13300 rpm	0664 331 150	100
115 mm	1.6 mm	22.23 mm	Straight	13300 rpm	0664 131 151	25
125 mm	0.6 mm	22.23 mm	Cranked	12250 rpm	0664 131 246	10
125 mm	0.8 mm	22.23 mm	Cranked	12250 rpm	0664 131 248	25
125 mm	1 mm	22.23 mm	Straight	12250 rpm	0664 131 250	25
125 mm	1 mm	22.23 mm	Straight	12250 rpm	0664 331 250	100
125 mm	1.6 mm	22.23 mm	Straight	12250 rpm	0664 131 251	25
180 mm	1.6 mm	22.23 mm	Straight	8500 rpm	0664 131 801	25
180 mm	2 mm	22.23 mm	Straight	8500 rpm	0664 131 802	25
230 mm	1.9 mm	22.23 mm	Straight	6600 rpm	0664 132 301	25
230 mm	2.5 mm	22.23 mm	Straight	6600 rpm	0664 132 302	25

Details/Application

- Suitable for steel and especially for stainless steel
- Particularly effective at cutting thin-walled pipes and profiles, thin metal sheets, bodywork panels etc.

Cutting quality



0.6 mm, 0.8 mm, 1.0 mm, 1.6 mm

Thermal load on thin sheet metal



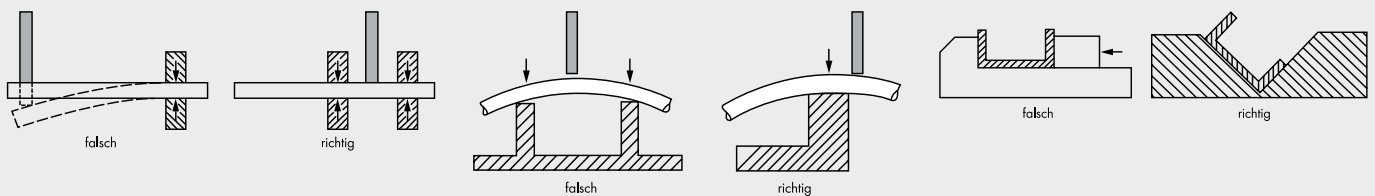
0.6 mm, 0.8 mm, 1.0 mm, 1.6 mm

Proof of performance

- Suitable for KWU Class II (e.g. pipeline and reactor construction)
- Complies with the most demanding safety requirements of European Standard EN 12413 and the OSA (the Organisation for the Safety of Abrasives)

Notice

- Storage: dry, at 20°C ambient temperature
- Work only with appropriate protective clothing
- Always use an appropriate protective cover when performing cutting work
- Only use undamaged discs
- Do not jam/tilt the discs during cutting - increased risk of breakage!
- Ensure proper contact pressure
- Always clamp cutting discs (straight design) with metal ring towards the machine
- For further information, please refer to the package insert



Use clamps so material doesn't shift

Clamp in one position so unwanted material can fall away

Place C-Section in a V block clamp when cutting. Eliminating flex

Related products		Art. no.
Safety goggles CEPHEUS®		0899 102 250
Related products for	Designation	Art. no.
0664 131 148	Angle grinder EWS 7-115 Basic	5707 011 0
0664 131 150	Angle grinder EWS 7-115 Basic	5707 011 0
0664 131 151	Angle grinder EWS 7-115 Basic	5707 011 0
0664 131 246	Angle grinder EWS 12-125 SOLID	5707 040 0
0664 131 248	Angle grinder EWS 12-125 SOLID	5707 040 0

Related products for	Designation	Art. no.
0664 131 250	Angle grinder EWS 17-125-EQ POWER	5707 061 2
	Cordless angle grinder AWS 18-125 P COMPACT M-CUBE	5701 402 005
0664 131 251	Angle grinder EWS 17-125-EQ POWER	5707 061 2
	Cordless angle grinder AWS 18-125 P COMPACT M-CUBE	5701 402 005
0664 131 801	Two-hand angle grinder EWS 24-180-S	0702 445 20
0664 131 802	Two-hand angle grinder EWS 24-180-S	0702 445 20
0664 132 301	Safety angle grinder SWS 26-230-T	5707 090 0
0664 132 302	Safety angle grinder SWS 26-230-T	5707 090 0
0664 331 150	Angle grinder EWS 7-115 Basic	5707 011 0
0664 331 250	Angle grinder EWS 17-125-EQ POWER	5707 061 2
	Cordless angle grinder AWS 18-125 P COMPACT M-CUBE	5701 402 005