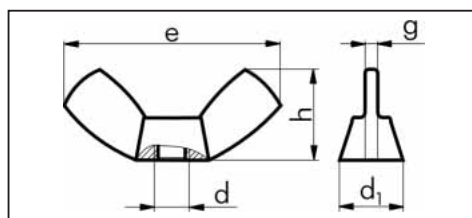


ORSY



Wing Nuts

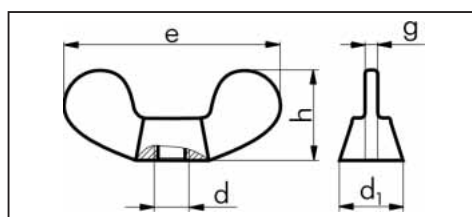
similar to DIN 315

American shape

Galvanized steel, blue passivated **A2, A4** (sim. to DIN)

Thr. dia. d	d ₁ in mm	e in mm	h in mm	g in mm	Steel galv., blue pass. Art. No.	P. Qty.	A2 simil. DIN 314 Art. No.	P. Qty.	A4 simil. DIN 314 Art. No.	P. Qty.
M3	6	12.6	6.4	1.1	0342 3	100	0344 04	25	0340 033	100
M4	8	17.6	8.6	1.6	0342 4				0340 034	
M5	10.3	22.5	11	2.1	0342 5				0340 035	
M6	12.7	27.8	13.6	2.5	0342 6				0340 036	
M8	13.8	30.3	14.8	2.8	0342 8				0340 038	
M10	16.5	36.2	17.7	3.3	0342 10	50	0344 010	10	0340 031 0	50
M12	22.5	49.4	24.1	4.5	0342 12	25	0344 012	5	0340 031 2	
M14	28.5	59.4	31.1	5.7	0342 14				0340 031 4	
M16	34.5	61	38.2	6.9	0342 16				0340 031 6	

ORSY

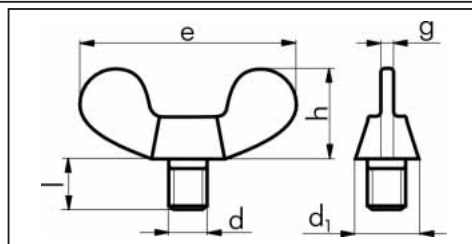


Wing Nuts

DIN 315
malleable cast iron
A2
A4

Thr. dia. d	d ₁ in mm	e in mm	h in mm	g in mm	Malleable cast iron Art. No.	P. Qty.	A2 Art. No.	P. Qty.	A4 Art. No.	P.
M4	6	18	8.5	1.9	0342 04	100	0344 004	100	0340 044	100
M5	8	24	11	2.3	0342 05		0344 005		0340 045	
M6	10	30	15	2.3	0342 06		0344 006		0340 046	
M8	13	36	18	2.8	0342 08		0344 008		0340 048	
M10	17	48	23	4.4	0342 010	50	0344 001 0		0340 041 0	
M12	20	62	31	4.9	0342 012	25	0344 001 2	20	0340 041 2	20
M16	26	70	35	6.4	0342 016		0344 001 6		0340 041 6	
M20	32	86	44	6.9	0342 020	10			0340 042 0	

ORSY



Wing Screws

DIN 316
Malleable cast iron

Thr. dia. d	M4	M5	M6	M8	M10
d ₁ in mm	6	8	10	13	17
e in mm	18	24	30	36	48
h in mm	8.5	11	15	18	23
g in mm	1.9	2.3	2.3	2.8	4.4

Thr. dia. d →	M4 Malleable cast iron Art. No.	P. Qty.	M5 Malleable cast iron Art. No.	P. Qty.	M6 Malleable cast iron Art. No.	P. Qty.	M8 Malleable cast iron Art. No.	P. Qty.	M10 Malleable cast iron Art. No.	P. Qty.	M12 Malleable cast iron Art. No.	P. Qty.
10			0237 5 10	250	0237 6 10	250	0237 8 10	50		50		25
12			0237 5 12		0237 6 12		0237 8 12					
16	0237 4 16	250	0237 5 16		0237 6 16		0237 8 16		0237 10 16	50		
18				250		50	0237 8 18	50		50		25
20	0237 4 20	250	0237 5 20		0237 6 20		0237 8 20		0237 10 20		0237 12 20	
25			0237 5 25		0237 6 25		0237 8 25		0237 10 25		0237 12 25	
30	0237 4 30	250	0237 5 30	100	0237 6 30	50	0237 8 30	50	0237 10 30	50	0237 12 30	25
35			0237 5 35		0237 6 35		0237 8 35		0237 10 35			
40			0237 5 40		0237 6 40		0237 8 40		0237 10 40		0237 12 40	
50				100	0237 6 50	50	0237 8 50	100	0237 10 50	50	0237 12 50	25
60					0237 6 60	100			0237 10 60		0237 12 60	