

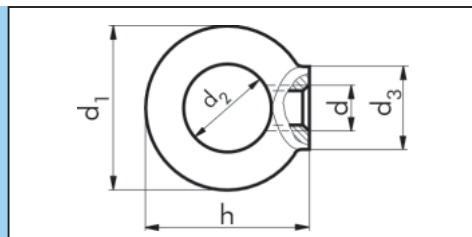
# Ring Bolts

## DIN 580

Steel, bright  
Steel, galvanized, blue passivated  
A2   
A4

Thread Ø d	M6	M8	M10	M12	M16	M20	M24	M30
d <sub>1</sub> mm	36	36	45	54	63	72	90	108
d <sub>2</sub> mm	20	20	25	30	35	40	50	60
d <sub>3</sub> mm	20	20	25	30	35	40	50	65
h mm	36	36	45	53	62	71	90	109
l mm	13	13	17	20.5	27	30	36	45

Thread Ø d	l mm	Steel, bright Art. No.	P. Qty.	Steel, galv., blue pass. Art. No.	P. Qty.	A2 Art. No.	P. Qty.	A4 Art. No.	P. Qty.
M 6	13	<b>0295 906</b>	25	<b>0295 96</b>	25	<b>0279 8</b>	50	<b>0280 8</b>	50
M 8	13	<b>0295 908</b>		<b>0295 98</b>				<b>0280 10</b>	
M10	17	<b>0295 901 0</b>		<b>0295 910</b>				<b>0280 12</b>	
M12	20.5	<b>0295 901 2</b>	5	<b>0295 912</b>	5	<b>0279 12</b>	25	<b>0280 16</b>	25
M16	27	<b>0295 901 6</b>		<b>0295 916</b>		<b>0279 16</b>		<b>0280 20</b>	
M20	30	<b>0295 902 0</b>		<b>0295 920</b>		<b>0279 20</b>		<b>0280 24</b>	
M24	36	<b>0295 902 4</b>	1	<b>0295 924</b>	1			<b>0280 24</b>	10
M30	45	<b>0295 903 0</b>		<b>0295 930</b>					



# Ring Nuts

## DIN 582

Steel, bright  
Steel, galvanized, blue passivated  
A2   
A4

Thread Ø d	M6	M8	M10	M12	M16	M20	M24	M27	M30
d <sub>1</sub> mm	36	36	45	54	63	72	90	90	108
d <sub>2</sub> mm	20	20	25	30	35	40	50	50	60
d <sub>3</sub> mm	20	20	25	30	35	40	50	50	65
h mm	36	36	45	53	62	71	90	90	109

Thread Ø d	Steel bright Art. No.	P. Qty.	Steel, galv., blue pass. Art. No.	P. Qty.	A2 Art. No.	P. Qty.	A4 Art. No.	P. Qty.
M 6	<b>0395 906</b>	25	<b>0395 96</b>	25	<b>0388 6</b>	50		50
M 8	<b>0395 908</b>		<b>0395 98</b>		<b>0388 8</b>		<b>0389 8</b>	
M10	<b>0395 901 0</b>		<b>0395 910</b>		<b>0388 10</b>		<b>0389 10</b>	
M12	<b>0395 901 2</b>	5	<b>0395 912</b>	5	<b>0388 12</b>	25	<b>0389 12</b>	25
M16	<b>0395 901 6</b>		<b>0395 916</b>		<b>0388 16</b>		<b>0389 16</b>	
M20	<b>0395 902 0</b>		<b>0395 920</b>		<b>0388 20</b>		<b>0389 20</b>	
M24	<b>0395 902 4</b>	1	<b>0395 924</b>	1	<b>0388 24</b>	10	<b>0389 24</b>	10
M27			<b>0388 27</b>		<b>0389 27</b>			
M30	<b>0395 903 0</b>		<b>0395 930</b>		<b>0388 30</b>		<b>0389 30</b>	

			M 8	M 10	M 12	M 16	M 20	M 24	M 30	M 36
Direction of pull	single		140	230	340	700	1200	1800	3200	4600
	double		100	170	240	500	860	1290	2300	3300

Maximum load by the suspended item in kg for DIN 580 and DIN 582.

Valid for type: steel, bright or steel, galvanized.