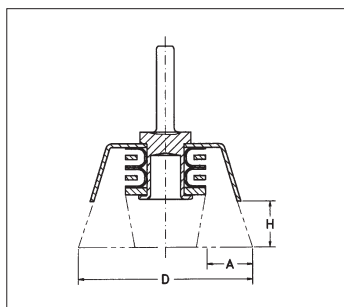


BRUSHES FOR STRAIGHT GRINDERS AND ELECTRIC DRILLS

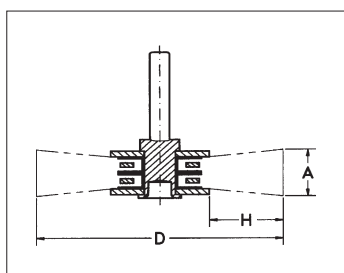
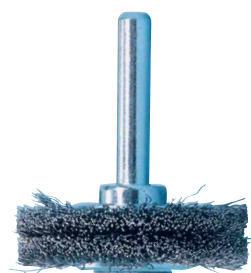
SURFACE BRUSHES WITH SHAFT (STEEL)



- For machining large areas.
- Hardened steel wire, corrugated.

D in mm	H in mm	A in mm	Wire dia. in mm	Shank dia. in mm	Max. rpm	Art. No.	P. Qty.
50	20	10	0.30	6	4,500	0714 69 12	1
70	25	15	0.30	6	4,500	0714 69 13	1

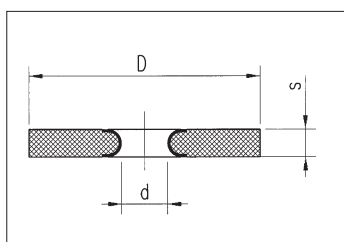
ROUND SHAFT BRUSHES (CORRUGATED STEEL WIRE)



- For light rust removal and deburring work.
- Especially well-suited for use in automotive sector; for cleaning welding seams.

D in mm	H in mm	A in mm	Wire dia. in mm	Shank dia. in mm	Max. rpm	Art. No.	P. Qty.
40	9	10	0.20	6	18,000	0714 69 10	1
60	17	16	0.30	6	15,000	0714 69 11	1
40	9	6	0.20	6	18,000	0714 69 100	1

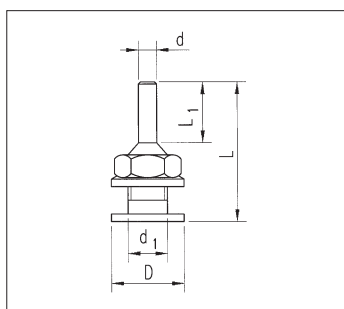
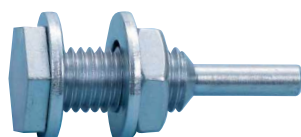
SAFETY LONG-LIFE BRUSH



- For hard-to-reach places, inner surfaces and grooves.
- Brass-plated, corrugated steel wire, bound in plastic.
→ Extremely high safety level and long tool life.
- Uniform wearing.

D in mm	d in mm	S in mm	Wire dia. in mm	Max. rpm	Art. No.	P. Qty.
60	13	8	0.30	10,000	0714 69 07	1

CLAMPING MANDREL



- For safety long-life brush.

D in mm	d in mm	d1 in mm	L in mm	L1 in mm	Art. No.	P. Qty.
22	6	12.7	45	20	0714 69 08	1

Note: Always wear safety goggles and safety gloves when working with machine brushes!