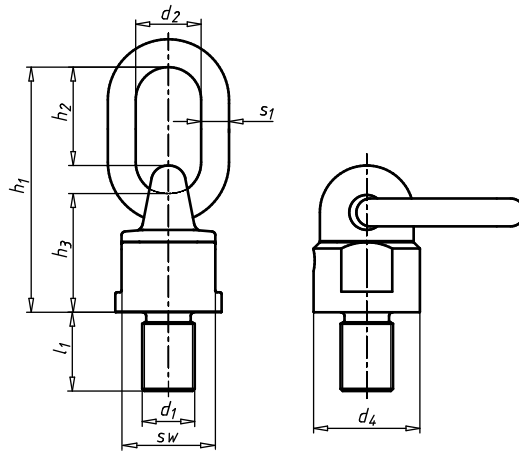


FK 10 SWIVEL HOIST RING



Screw-on, rotating attachment for lifting heavy loads that need to be rotated or turned.

- Safety factor of 4 in all load directions
- Rotates 360° – eyelet 180° self-adjusting, pivoting
- Ball bearing mounted for easier loading
- Crack tested to 100%
- Strength class 10
- Painted in RAL 3022



Thread type x nominal diameter (d ₁)	Internal diameter (d ₂)	Ring thickness (s ₁)	Interior height (h ₂)	Body height (h ₃)	Height (h ₁)	Width across flats (sw)	Diameter of contact surface (d ₄)	Thread length (l ₁)	Material	Art. No.	P. Qty.
M10	30 mm	13 mm	46 mm	50 mm	105 mm	30 mm	38 mm	18 mm	Steel	5162 510 18	1
M12	30 mm	13 mm	46 mm	50 mm	105 mm	30 mm	38 mm	18 mm	Steel	5162 512 18	1
M14	30 mm	15 mm	46 mm	50 mm	105 mm	30 mm	38 mm	20 mm	Steel	5162 514 20	1
M16	30 mm	13 mm	46 mm	50 mm	105 mm	30 mm	38 mm	20 mm	Steel	5162 516 20	1
M20	30 mm	13 mm	46 mm	50 mm	105 mm	30 mm	38 mm	30 mm	Steel	5162 520 30	1
M20	34 mm	16 mm	57 mm	71 mm	156 mm	70 mm	80 mm	30 mm	Steel	5162 520 301	1
M24	30 mm	13 mm	46 mm	50 mm	105 mm	30 mm	38 mm	30 mm	Steel	5162 524 30	1
M24	40 mm	18 mm	70 mm	68 mm	153 mm	48 mm	58 mm	30 mm	Steel	5162 524 301	1
M30	40 mm	18 mm	70 mm	68 mm	153 mm	48 mm	58 mm	35 mm	Steel	5162 530 351	1
M30	40 mm	20 mm	65 mm	71 mm	156 mm	70 mm	80 mm	35 mm	Steel	5162 530 35	1
M30	50 mm	23 mm	90 mm	86 mm	200 mm	80 mm	90 mm	45 mm	Steel	5162 530 45	1
M36	50 mm	23 mm	90 mm	86 mm	200 mm	80 mm	90 mm	54 mm	Steel	5162 536 54	1
M42	50 mm	23 mm	90 mm	86 mm	200 mm	80 mm	90 mm	63 mm	Steel	5162 542 63	1
M45	50 mm	23 mm	90 mm	86 mm	200 mm	80 mm	90 mm	60 mm	Steel	5162 545 60	1
M45	70 mm	32 mm	120 mm	112 mm	262 mm	100 mm	120 mm	60 mm	Steel	5162 545 601	1
M48	50 mm	23 mm	90 mm	86 mm	200 mm	80 mm	90 mm	72 mm	Steel	5162 548 72	1
M48	70 mm	32 mm	120 mm	112 mm	262 mm	100 mm	120 mm	60 mm	Steel	5162 548 60	1
M56	70 mm	32 mm	120 mm	112 mm	262 mm	100 mm	120 mm	78 mm	Steel	5162 556 78	1
M64	90 mm	45 mm	122 mm	165 mm	333 mm	134 mm	170 mm	96 mm	Steel	5162 564 96	1
M72	90 mm	45 mm	122 mm	165 mm	333 mm	134 mm	170 mm	108 mm	Steel	5162 572 108	1
M80	90 mm	45 mm	122 mm	165 mm	333 mm	134 mm	170 mm	120 mm	Steel	5162 580 120	1
M90	90 mm	45 mm	122 mm	165 mm	333 mm	134 mm	170 mm	135 mm	Steel	5162 590 135	1

Notice

Not suitable for constant rotating movements under load. With axial tension, a deviation of +/- 5° with a reduction in load-bearing capacity by 10% is permitted.

Proof of Performance (Pub)

- Suitable for safe lifting of loads in accordance with Machine Directive 2006/42/EC
- Designed, tested and certified in accordance with GS-OA 15-04-EN 1677
- Designed for a load of 20,000 load changes