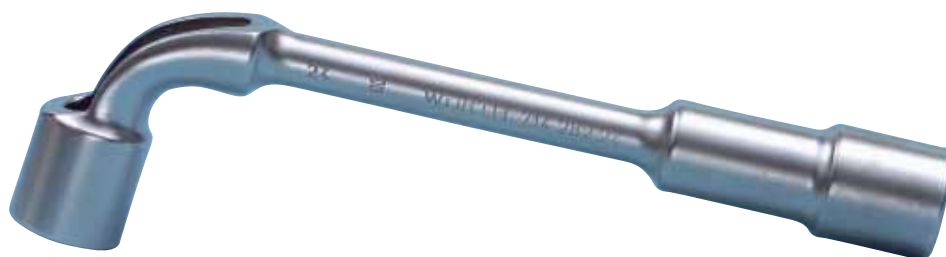


ANGLED SOCKET WRENCH



Cranked box wrench

Design: Metric, drilled through.

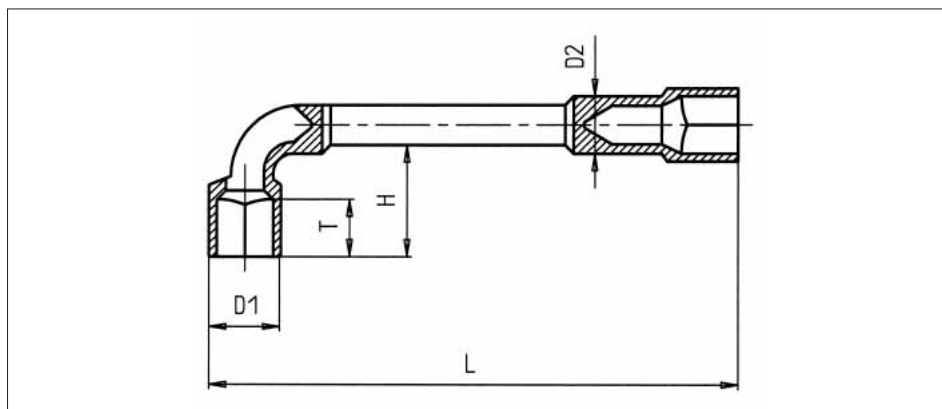
Drive: Powerdriv
Short side: 12-point.
Long side: Hex



Standard: ISO 2236

Material: Chrome-vanadium-steel

Surface: Chrome-plated



Geometry: Drilled through
Short side: Drill hole
Long side: Deep hollow design.

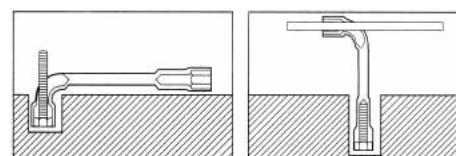


|  /  | L in mm | Dia. D in mm | Dia. D ₂ in mm | T in mm | H in mm | Art. No. | P. Qty. |
|--|------------|-----------------|------------------------------|------------|------------|--------------------|---------|
| 8 | 110 | 12 | 11 | 6 | 24 | 0714 282 08 | 1 |
| 9 | 115 | 13 | 12 | 7 | 25 | 0714 282 09 | 1 |
| 10 | 125 | 14.5 | 14 | 7.5 | 27 | 0714 282 10 | 1 |
| 11 | 130 | 16.5 | 14.5 | 8 | 29 | 0714 282 11 | 1 |
| 12 | 145 | 17.5 | 15.5 | 9 | 31 | 0714 282 12 | 1 |
| 13 | 160 | 19 | 17 | 9.5 | 34 | 0714 282 13 | 1 |
| 14 | 175 | 20.5 | 19 | 10 | 36 | 0714 282 14 | 1 |
| 15 | 180 | 21.5 | 19.5 | 11 | 38 | 0714 282 15 | 1 |
| 16 | 190 | 23 | 21 | 11 | 43 | 0714 282 16 | 1 |
| 17 | 195 | 24.5 | 21 | 12 | 44 | 0714 282 17 | 1 |
| 18 | 200 | 25.5 | 22 | 13 | 45 | 0714 282 18 | 1 |
| 19 | 210 | 27 | 23.5 | 15 | 48 | 0714 282 19 | 1 |
| 21 | 225 | 29.5 | 24 | 15 | 51 | 0714 282 21 | 1 |
| 22 | 235 | 31 | 24.5 | 16 | 53 | 0714 282 22 | 1 |
| 24 | 255 | 33.5 | 27 | 19 | 60 | 0714 282 24 | 1 |
| 27 | 275 | 37 | 31 | 21 | 63 | 0714 282 27 | 1 |



Angled socket wrench set

| Set |  /  | Art. No. | P. Qty. |
|-----|---|--------------------|---------|
| 10 | 8, 10, 11, 13, 16, 17, 18, 19, 22, 24 | 0714 282 40 | 1 |



Specific offset and drill hole: A threaded rod or a lever pin can be inserted through. Thanks to the deep hollow design of the socket wrench, tightening is also possible with protruding threads.