

BRUSHES FOR STRAIGHT GRINDERS

SHANK BRUSHES/ TAPERED BRUSHES

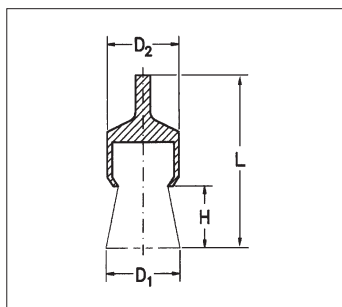
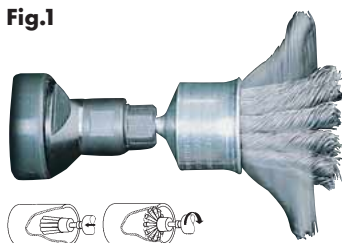


Fig.1



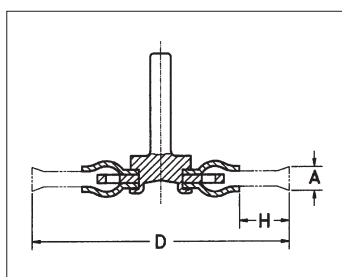
- Tapered brushes feature especially high-quality wire. The brush opens more or less depending on the speed and enables working in hard-to-reach areas, e.g. drilled holes and housing parts.

Steel/Stainless-Steel Wire*

D1 in mm	D2 in mm	H in mm	L in mm	Wire dia. in mm	Shank dia. in mm	Max. rpm	Art. No.	P. Qty.
19	19	30	72	0.35	6	20,000	0714 69 04	1
30	29	30	72	0.50	6	20,000	0714 69 05	1
19	19	30	72	0.25	6	20,000	0714 692 119*	1

* Version with stainless-steel wire, plastic-covered sleeve

SHANK ROUND BRUSH (BRAIDED STEEL WIRE)



- Brush for light and medium-heavy deburring and rust removal work. Especially well-suited for removing underseal, paint, scale and welding residues.
- Hardened steel wire, braided clockwise.

D in mm	H in mm	A in mm	Wire dia. in mm	Shank dia. in mm	Max. rpm	Art. No.	P. Qty.
75	15	12	0.50	6	20,000	0714 69 06	1

Note: Always wear safety goggles and safety gloves when working with machine brushes!