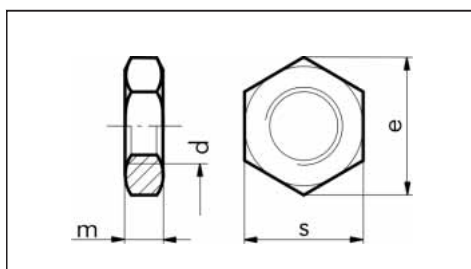


orsy



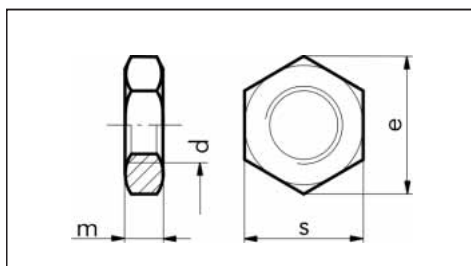
Hexagon Nuts

DIN 439
low-profile

Thread d	m in mm	s in mm	e in mm	Steel bare Art. No.	P. Qty.	Steel galv., blue pass. Art. No.	P. Qty.	A2 Art. No.	P. Qty.	A4 Art. No.	P. Qty.
M 3	1.8	5.5	6.01			0318 3	300/1000	0328 3	300	0334 3	1000
M 4	2.2	7.0	7.66	0311 4	500	0318 4	300/1000	0328 4	300	0334 4	1000
M 5	2.7	8.0	8.79	0311 5	500	0318 5	300	0328 5	300	0334 5	1000
M 6	3.2	10.0	11.05	0311 6	500	0318 6	300/1000	0328 6	300	0334 6	1000
M 8	3.7	13.0	14.38	0311 8	500	0318 8	300/1000	0328 8	300	0334 8	200
M 10	4.7	17.0	18.90	0311 10	100	0318 10	300/1000	0328 10	300	0334 10	200
M 12	5.7	19.0	21.10	0311 12	100	0318 12	100	0328 12	300	0334 12	200
M 14	6.42	22.0	24.49	0311 14	50	0318 14	50	0328 14	300		
M 16	7.42	24.0	26.75	0311 16	50	0318 16	50	0328 16	100	0334 16	200
M 18	8.42	27.0	29.56	0311 18	25	0318 18	25				
M 20	9.1	30.0	32.95	0311 20	25	0318 20	25	0328 20	50	0334 20	100
M 24	10.9	36.0	39.55	0311 24	25	0318 24	25	0328 24	50		
M 27	12.4	41.0	45.20	0311 27	25	0318 27	25				
M 30	13.9	46.0	50.85	0311 30	5	0318 30	5				

Bare steel
Galvanized, blue passivated steel
A2
A4

orsy



Hexagon Nuts

DIN 936,
low-profile,
old version

Thread d	s in mm	e in mm	m in mm	Steel galv., blue pass. Art. No.	P. Qty.	Thread d	Steel galv., blue pass. Art. No.	P. Qty.
M 8	13	14.38	5	0319 8	100/1000	–	–	
M 10	17	18.9	6	0319 10	100	M 10 x 1	0319 10 1	100
M 12	19	21.1	7	0319 12	100	M 12 x 1.5	0319 12 15	100
M 14	22	24.49	8	0319 14	100	M 14 x 1.5	0319 14 15	100
M 16	24	26.75	8	0319 16	50	M 16 x 1.5	0319 16 15	50
M 18	27	29.56	9	0319 18	50	M 18 x 1.5	0319 18 15	50
M 20	30	32.95	9	0319 20	50	M 20 x 1.5	0319 20 15	50
M 22	32	35.03	10	0319 22	50	M 22 x 1.5	0319 22 15	5
M 24	36	39.55	10	0319 24	5	M 24 x 1.5	0319 24 15	5
M 27	41	45.2	12	0319 27	50	M 27 x 1.5	0319 27 15	5
M 30	46	50.85	12	0319 30	5	M 30 x 1.5	0319 30 15	5

Galvanized, blue passivated steel